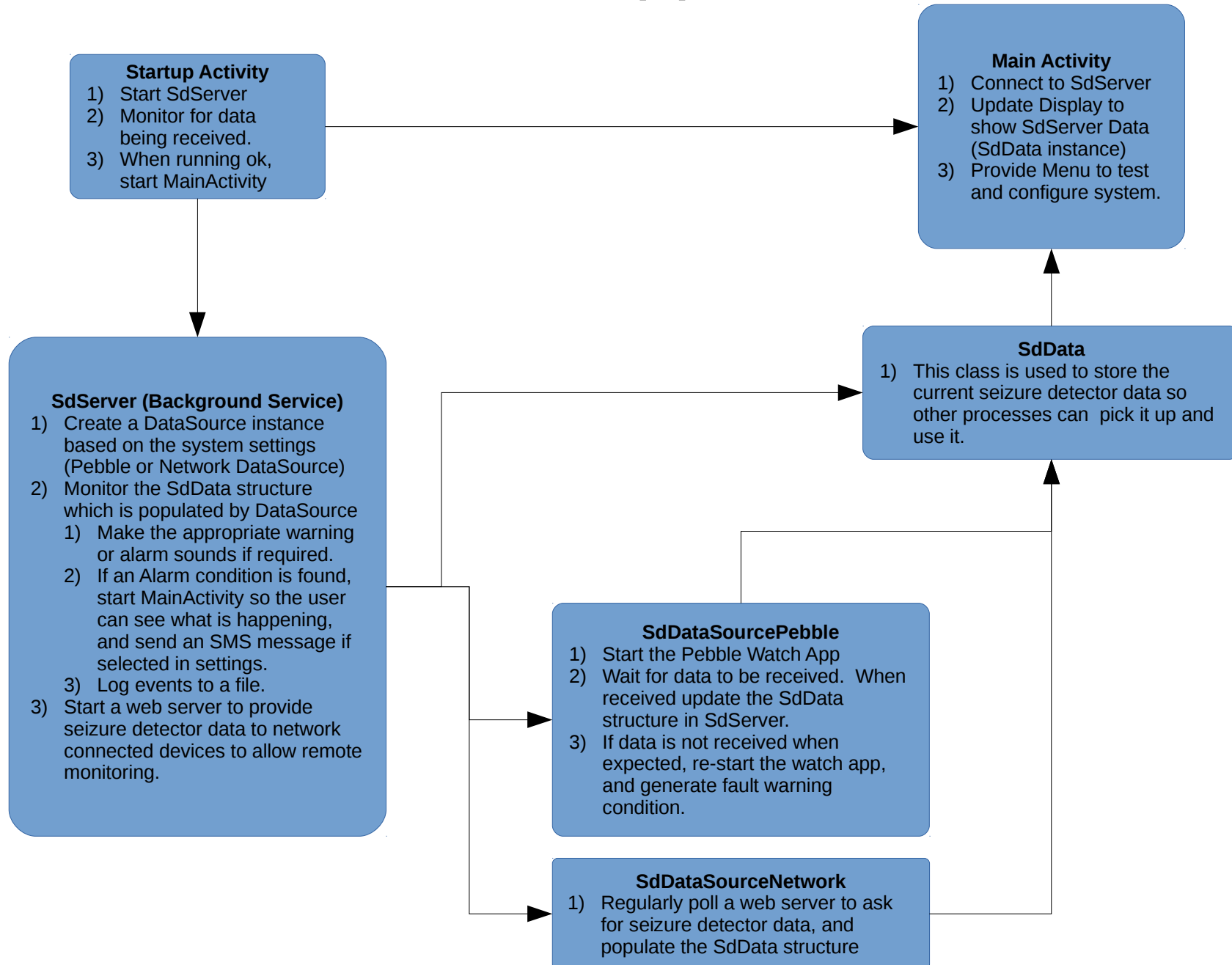


OpenSeizureDetector Alarm System

- The OpenSeizureDetector Alarm System (the OpenSeizureDetector Android App) has 4 main purposes:
 - **Start the 'DataSource'** that provides seizure detection.
 - **Monitor that data is being received** from the DataSource at the expected period and raise fault warnings if not.
 - Monitor the data returned by the DataSource and **raise the appropriate alarm warnings**:
 - Locally by making an alarm noise.
 - Remotely by SMS.
 - Provide a **web interface** that other devices can use to monitor the seizure detector remotely over wifi.

Android App Structure



OpenSeizureDetector GitHub Repositories

- **Pebble_SD** – the Pebble Watch App, that does the seizure detection, and sends data back to the Android App.
- **Android_Pebble_SD** – the Android App that provides the alarm system. It is intended to be generic and use one of a number of data sources – currently works with Pebble and Network data sources, but the intention is to expand it to work with Android Wear and Empatica Embrace.